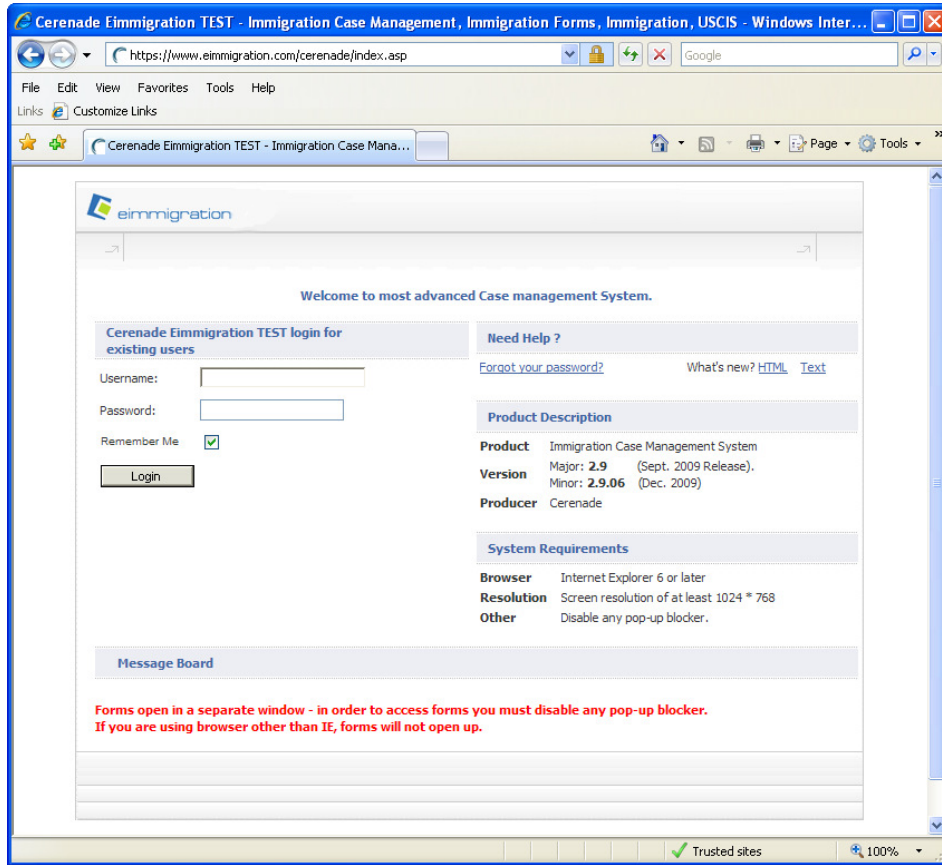


CAN I LOGIN TO EIMMIGRATION FROM MY LAW FIRM'S WEB PAGE?

Normally, users who access EIMMIGRATION would login through the following screen:



To provide your users with a custom access to EIMMIGRATION you can add the login fields to your own web page. It may look something like this:

| | |
|--------------|---------------------------------------|
| | |
| EIMMIGRATION | |
| User name: | |
| Password: | |
| | login |
| | Forgot Your Password? |
| | Submit Questionnaire |

NOTE: Optionally, your clients or visitors can submit **Unsolicited Questionnaires**.



Simply add the following HTML code to your web page:

```
<SCRIPT language=JavaScript><!--
function MM_findObj(n, d) { //v4.01
var p,i,x; if(!d) d=document; if((p=n.indexOf("?"))>0&&parent.frames.length) {
d=parent.frames[n.substring(p+1)].document; n=n.substring(0,p);}
if(!(x=d[n])&&d.all) x=d.all[n]; for (i=0;!x&&i<d.forms.length;i++) x=d.forms[i][n];
for(i=0;!x&&d.layers&&i<d.layers.length;i++) x=MM_findObj(n,d.layers[i].document);
if(!x && d.getElementById) x=d.getElementById(n); return x;
}

function MM_validateForm() { //v4.0
vari,p,q,nm,test,num,min,max,errors="",args=MM_validateForm.arguments;
for (i=0; i<(args.length-2); i+=3) { test=args[i+2]; val=MM_findObj(args[i]);
if (val) { nm= val.name; if((val=val.value)!="") {
if (test.indexOf('isEmail')!=-1) { p=val.indexOf('@');
if (p<1 || p==(val.length-1)) errors+='- '+nm+' must contain an e-mail address.\n';
} else if (test!='R') {
if (isNaN(val)) errors+='- '+nm+' must contain a number.\n';
if (test.indexOf('inRange') != -1) { p=test.indexOf(':');
min=test.substring(8,p); max=test.substring(p+1);
if (val<min || max<val) errors+='- '+nm+' must contain a number between '+min+' and '+max+'.\n';
} } } else if (test.charAt(0) == 'R') errors += '- '+nm+' is required.\n'; }
} if (errors) alert("The following error(s) occurred:\n"+errors);
document.MM_returnValue = (errors == "");
}
//-->
</SCRIPT>

<FORM name=form1
onsubmit="MM_validateForm('txtusername','R','txtpassword','R');return document.MM_returnValue"
action=https://www.eimmigration.com/<your tag goes here>/Indexs.asp method=post>
<TABLE BORDER=0 style="font-family:Arial;font-size:9px;" height="125">
<tr><td height="13"></td></tr>
<tr>
<TD align=right height="12"><b>EIMMIGRATION</b></TD>
<TD height="12"></TD>
</tr>
<TR><TD align=right height="19"><b>User&nbsp;name:</b></TD>
<TD height="19">
<INPUT NAME="txtusername" VALUE="" SIZE="20" maxlength=100 tabindex="1" style="font-size: 8pt"></TD></TR>
<TR><TD align=right height="19"><b>Password:</b></TD>
<TD height="19">
<INPUT TYPE="password" NAME="txtpassword" SIZE="20" maxlength=20 tabindex="2" style="font-size: 8pt"></TD></TR>
<tr>
<td colspan="2" align="right" height="26">
<input type="submit" name="frmAction" value="login" tabindex="3"></td>
</tr>
<TR><td colspan="2" align="right" height="12">
<b>
<a href="https://www.eimmigration.com/<your tag goes here>/forgotpassword.asp">
Forgot Your Password?</a></b></td></tr>
</TABLE>
</FORM>
```



For more information and articles, please visit www.eimmigration.com