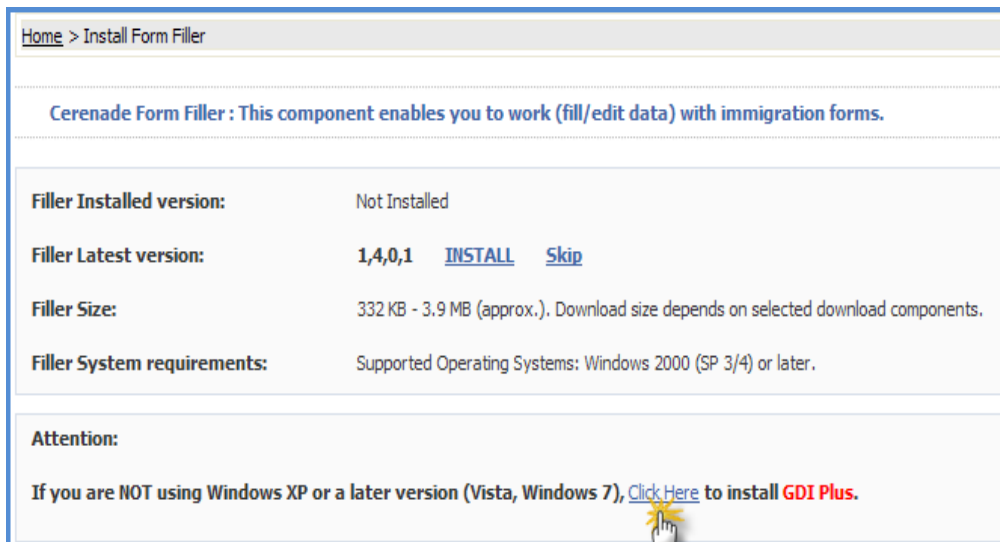


HOW TO INSTALL GDI PLUS COMPONENT

Note: you need administrator rights to install this component.

1) Under **Attention**, click where it reads **Click Here to install GDI Plus.**



Home > Install Form Filler

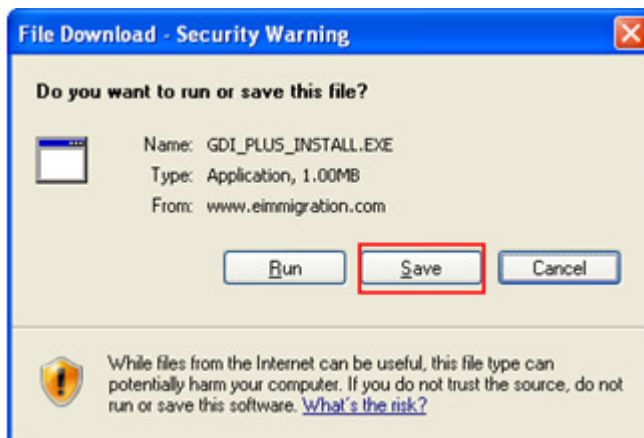
Cerenade Form Filler : This component enables you to work (fill/edit data) with immigration forms.

Filler Installed version:	Not Installed
Filler Latest version:	1,4,0,1 INSTALL Skip
Filler Size:	332 KB - 3.9 MB (approx.). Download size depends on selected download components.
Filler System requirements:	Supported Operating Systems: Windows 2000 (SP 3/4) or later.

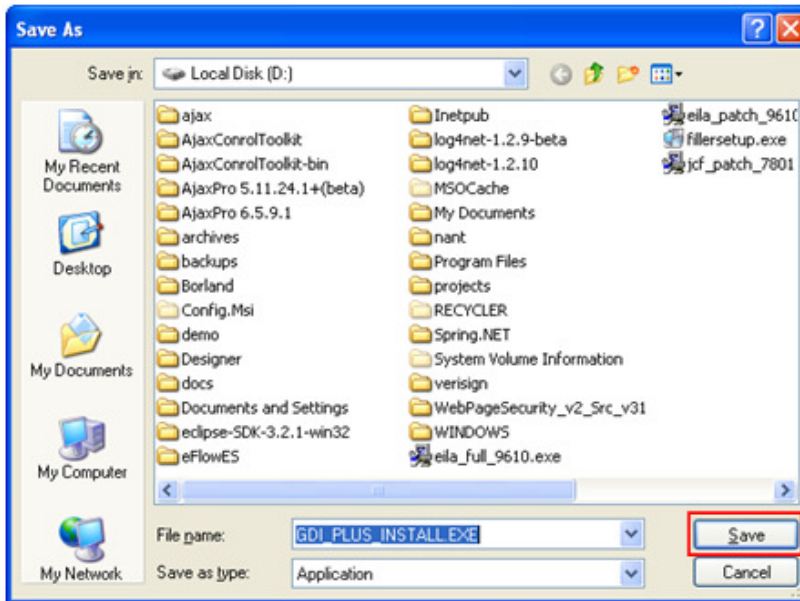
Attention:

If you are NOT using Windows XP or a later version (Vista, Windows 7), [Click Here](#) to install **GDI Plus**.

2) Click **Save** button.

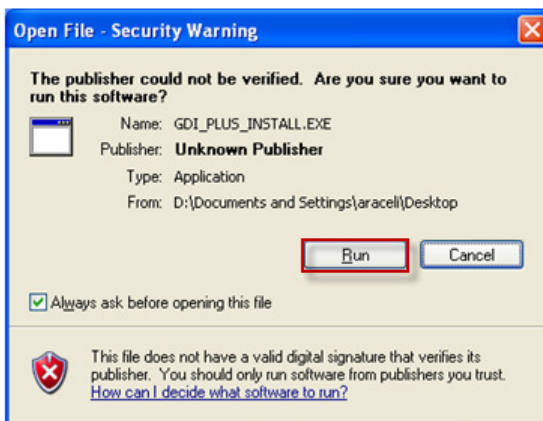


3) Save the file to your Desktop and click **Save** button.

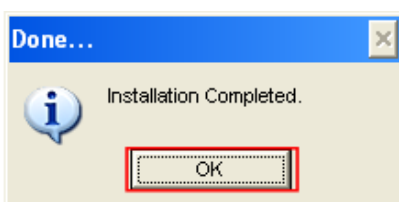


4) Once the download completes, locate “**GDI_PLUS_INSTALL.EXE**” and Double-Click on it.

5) Click **Run** button.



6) Once installation is complete click **OK** button.





Related Articles:

How to install Cerenade Form Filler:

http://www.cerenade.com/eimmigration/How_To_Install_Cerenade_Form_Filler.pdf

For more information and articles, please visit www.eimmigration.com