

HOW TO INSTALL CERENADE FORM FILLER

When you login to **Eimmigration** and you see the following advisory screen, this means that Cerenade Form Filler is not installed properly or is not installed and needs to be installed.

ATTENTION: If you are NOT using Windows XP or a later version (Vista, Windows 7), you need to download and install **GDI Plus** component. Click on the below link for instructions on how to install GDI Plus.

<http://www.cerenade.com/eimmigration/InstallGDIPlusComponent.pdf>

1) Click where it reads, **INSTALL**.

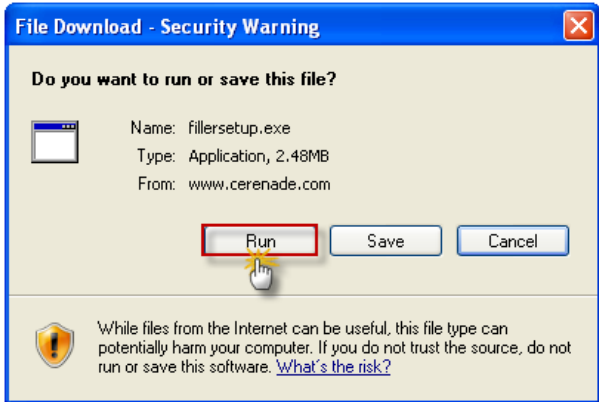
2) Click on **Run** button.

1. Installation should auto-start in a few seconds. If it does not, [Click here](#).

2. Select **Repair** if Filler installation prompts you to **Modify, Repair or Remove**.

3. After installation is complete, click [here](#) or **Back** button of your browser.

Powered by Cerenade



File Download - Security Warning

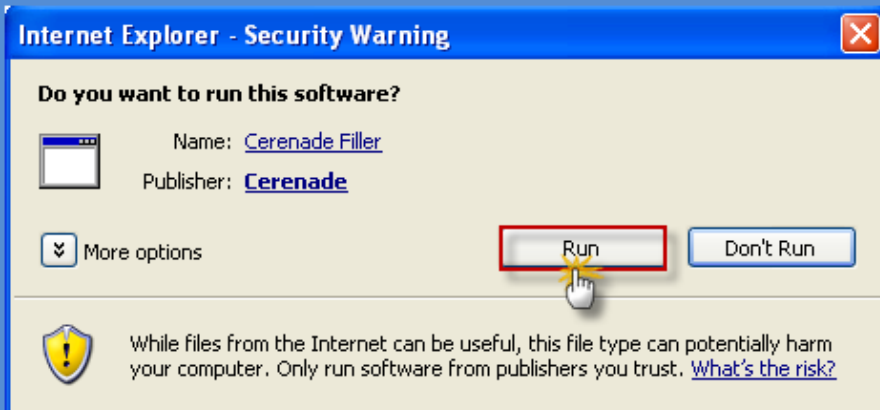
Do you want to run or save this file?

Name: fillersetup.exe
Type: Application, 2.48MB
From: www.cerenade.com

Run Save Cancel

While files from the Internet can be useful, this file type can potentially harm your computer. If you do not trust the source, do not run or save this software. [What's the risk?](#)

3) Click on **Run** button.



Internet Explorer - Security Warning

Do you want to run this software?

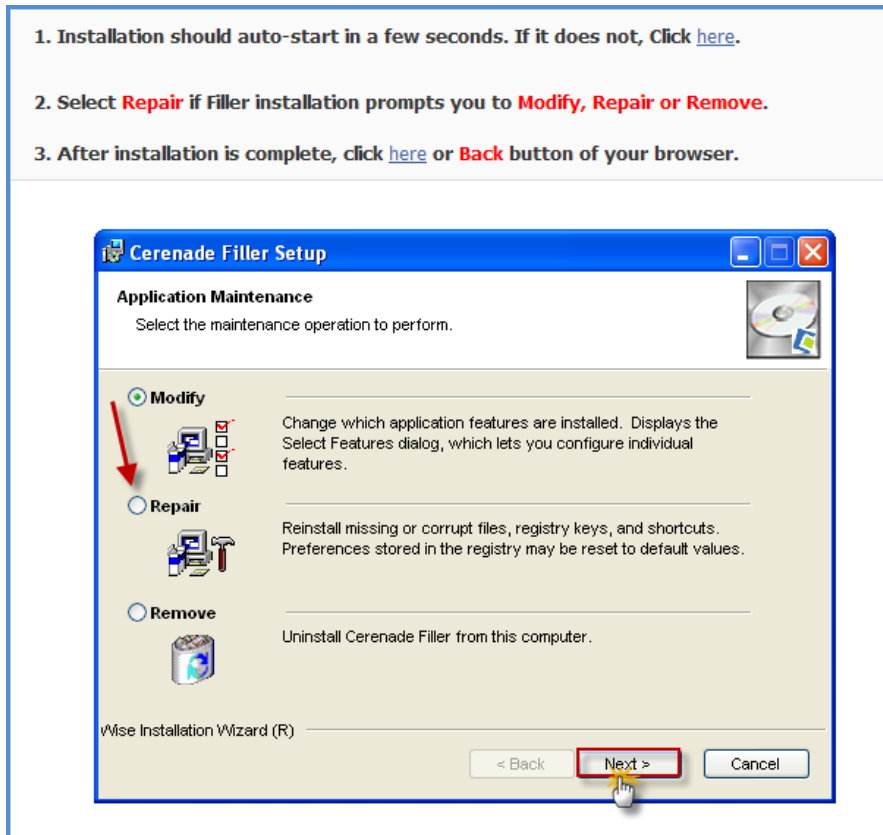
Name: [Cerenade Filler](#)
Publisher: [Cerenade](#)

More options

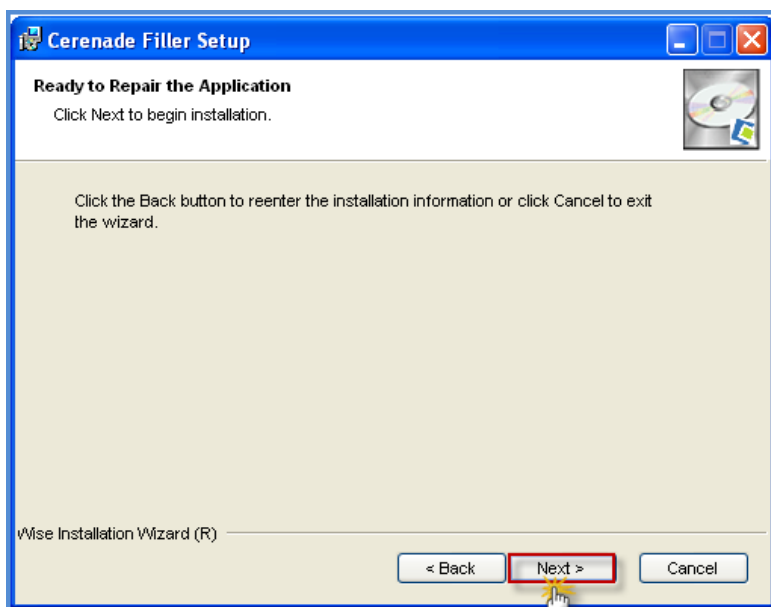
Run Don't Run

While files from the Internet can be useful, this file type can potentially harm your computer. Only run software from publishers you trust. [What's the risk?](#)

4) If you get the **Cerenade Filler Setup** window, select **Repair** then click **Next**.



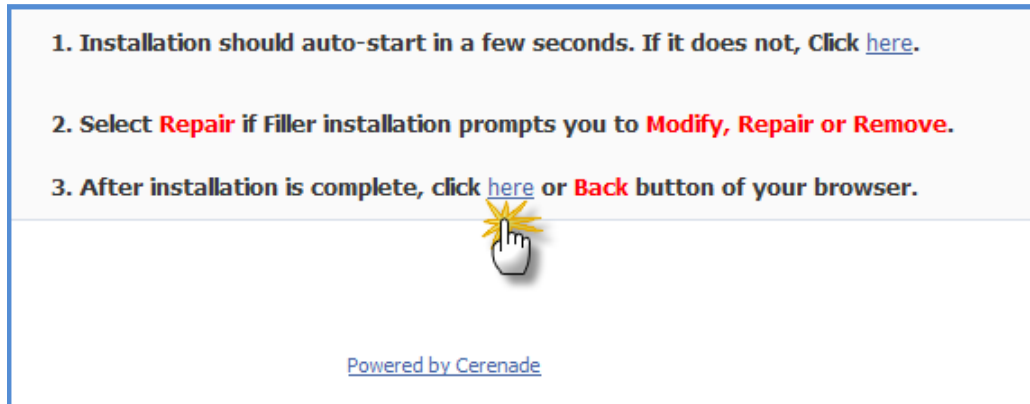
5) Click on **Next** button



6) Click on **Finish** button.



7) On step 3, click where it reads **click here or Back button of your browser.**



Related Articles:

How to install GDI Plus component:

http://www.cerenade.com/eimmigration/How_To_Install_Cerenade_Form_Filler.pdf

How to configure Internet Explorer security settings:

http://www.cerenade.com/eimmigration/Configuring_Internet_Explorer_Browser_Security_Settings_for_EIMMIGRATION.pdf

For more information and articles, please visit www.eimmigration.com