



HOW TO TRANSFER EILA DATABASE TO ANOTHER COMPUTER

Pre-requisites: EILA needs to be installed onto new computer.

Steps for PC computer (NEW):

- 1) EILA has been installed to new computer.
- 2) Call Cerenade Support to Activate EILA at (310) 645-0598.
- 3) Once Activation has been successful follow the next steps for **PC computer (OLD)**.

Steps for PC computer (OLD):

1) To **Backup** your EILA database you need to copy EILA.MDB and paste it to a CD or USB flash drive (external storage device) or through your internal Network.

NOTE: you can name your backup copy of EILA database file anything you want. However, when you restore this file you need to rename it to EILA.mdb or EILA would not recognize it.

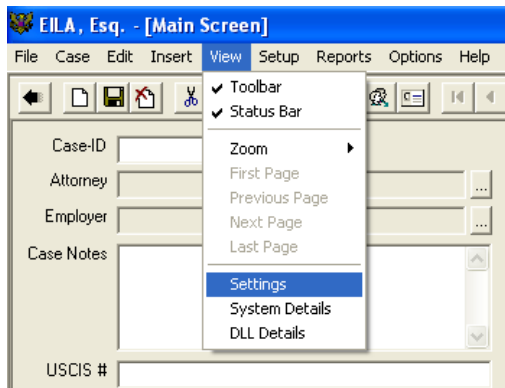
Before you start take a moment to learn the following:

What is the filename for EILA database

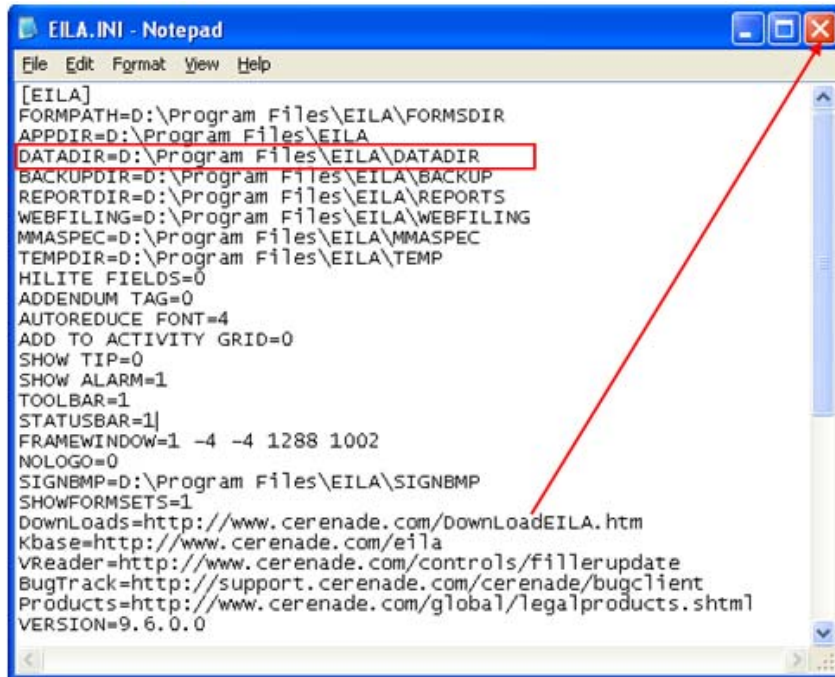
EILA database filename is **EILA.MDB**

2) Where is EILA.MDB stored?

- Open EILA (double click EILA icon)
- Go to View then select Settings.



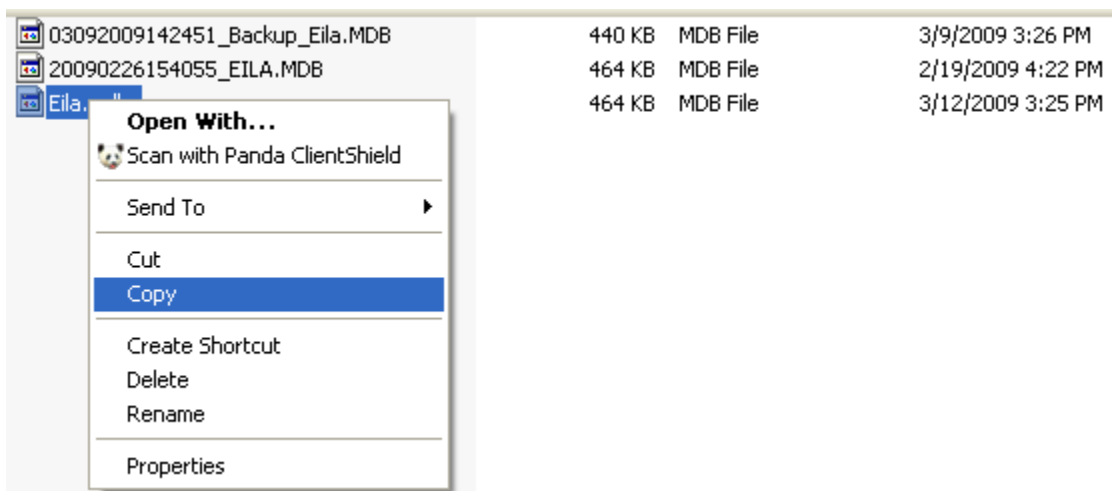
3) Following window will appear. Locate **DATADIR** parameter points to the folder where EILA.MDB is located or should be located. Make a note of the location.



4) Click on the **X** button and **Exit** EILA.

5) Browse to the folder where database is located.

- Locate **Eila.mdb** 
- Right-click on **Eila.mdb** and select **Copy**.



6) Paste **Eila.mdb** to a CD or USB flash drive (external storage device) or through your internal Network.
Steps for PC (NEW) computer to transfer database:

There are two methods to transfer the database to the new computer. The first method is through a media device and the second method is to restore the database.

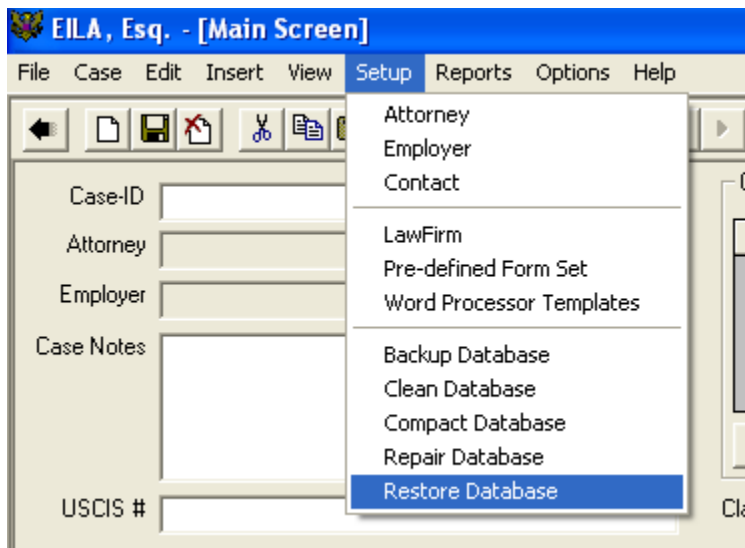
First method to transfer database:

Using a media device such as a CD or USB flash drive or through your internal Network follow these steps:

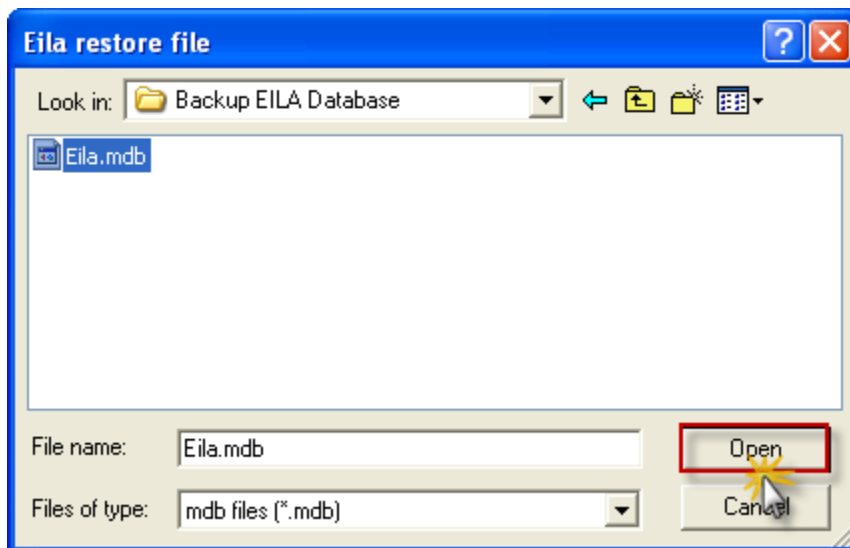
- 1) Open the media device where you copy the EILA database and browse to the folder where the database is located on the new computer.
- 2) Paste the **Eila.mdb** to the database folder.
- 3) Open EILA (double-click on icon)
- 4) Verify that all data was successfully transferred.
- 5) Once data has transferred successfully follow the next steps for **PC computer OLD**.

Second method to transfer database is to restore database:

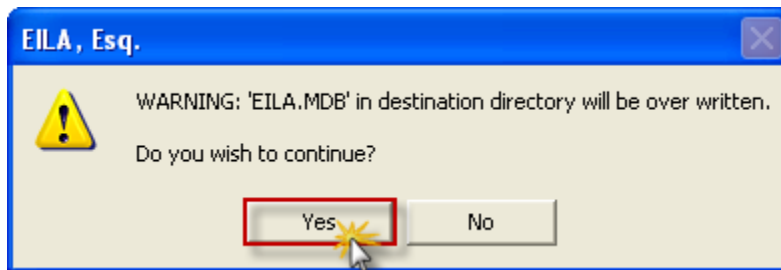
- 1) Open EILA (double-click EILA icon) on the new computer.
- 2) Go to **Setup** then select **Restore Database**.



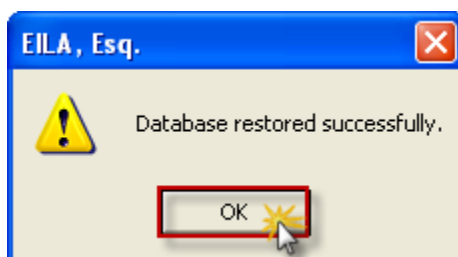
3) Browse to the folder where database is located and click **Open**.



4) Click **YES** to over write.



5) Click **Ok** button.



6) Verify that all data was transfer successfully.



Steps for PC computer (OLD) to remove license:

1) Visit http://www.cerenade.com/eila/How_to_remove_license_from_EILA.pdf for details on how to remove license.

Related Articles:

Installing EILA on Windows XP:

http://www.cerenade.com/eila/How_to_install_EILA_to_a_new_PC.pdf

Installing EILA on Microsoft Vista:

http://www.cerenade.com/eila/006_EILAOnVista.htm

Before installing Cerenade software into Windows Vista, refer to this article to allow the installation to go through properly:

http://www.cerenade.com/eila/001_Vista_User_Account_Control.pdf