

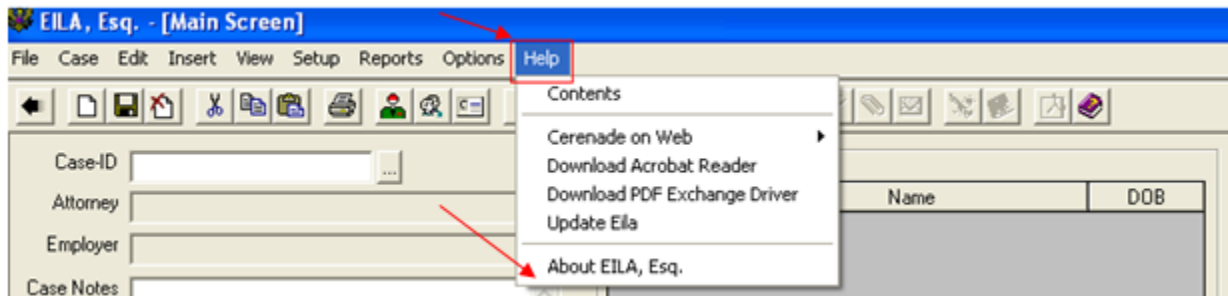
## How to upgrade EILA to the latest version

NOTE: YOU WILL NEED TO **EXIT EILA** WHEN UPDATING WITH MAJOR/MINOR UPDATE.

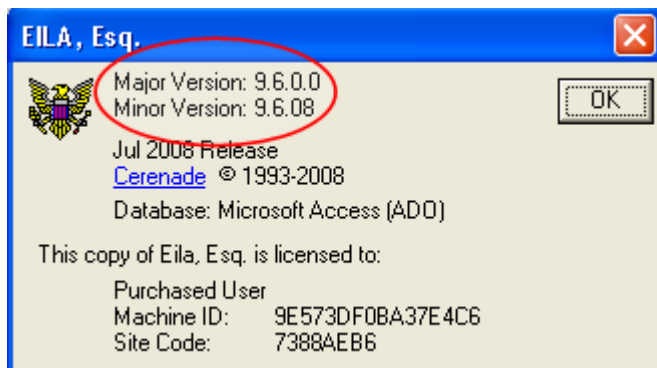


1) Start **EILA** (Double click **EILA** icon at desktop).

2) Check to see what version of EILA is currently installed on your PC. Click **Help** on Menu Bar and then click **About EILA, Esq.**



3) Following window will appear. Note down the **Major** and **Minor** versions.



4) **EXIT** EILA

5) Visit <http://www.cerenade.com/DownLoadEILA2.htm> to download latest version.

6) Scroll down to section labeled **EILA Full Release**.

EILA Full Release - VERSION 9.6.09 Complete program - for new installations	Date added	File size
<b>NOTE:</b> If you are currently using EILA version 9.6.08 DO NOT install this FULL Release. Instead, install the latest Minor Release further down.	02/02/2009	85,462 kb

7) Compare your **Major Version (from your PC)** v/s the website version.

- If **Major Version** (from your PC) is lower than version available on website, then you will need to download and update with **EILA Full Release**.

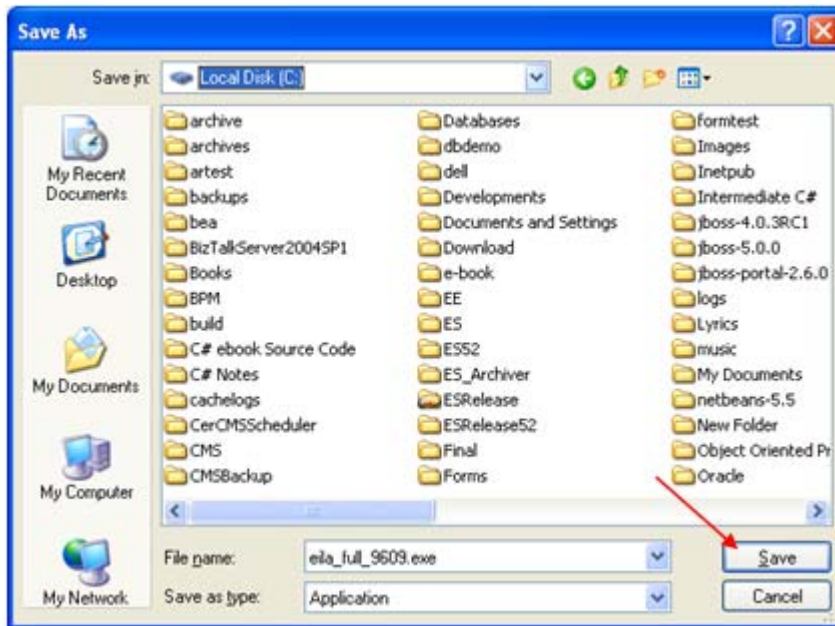
EILA Full Release - VERSION 9.6.09 Complete program - for new installations	Date added	File size
<b>NOTE:</b> If you are currently using EILA version 9.6.08 DO NOT install this FULL Release. Instead, install the latest Minor Release further down.	02/02/2009	85,462 kb
<a href="#">Download FULL version of the latest EILA ESQ</a> <a href="#">Click here for Installation Password</a>		

8) Click on the **Download FULL version of the latest EILA ESQ** link for Major version.

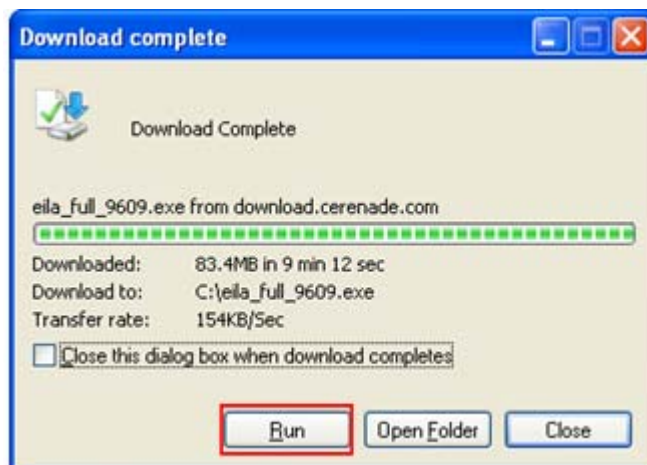
9) Click **Save** button.



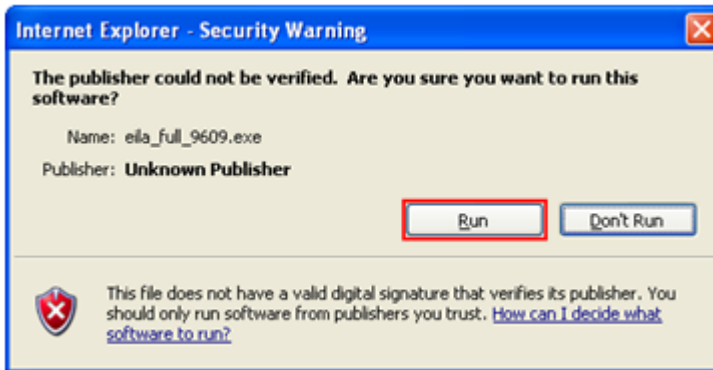
10) Save the file to your local folder or to the physical local disk such as the C: or D: drive and click **Save** button.



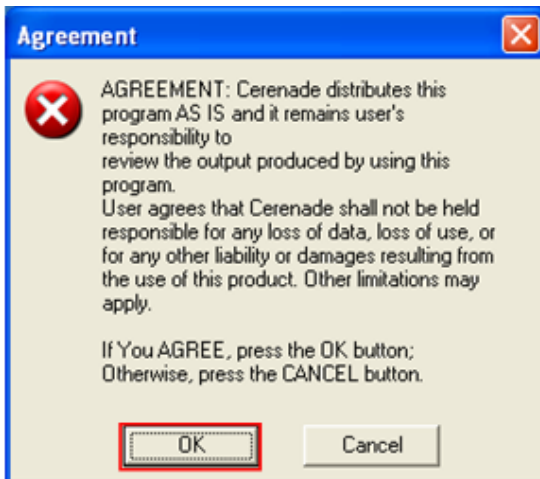
11) The **Download complete** window appears, click on the **Run** button.



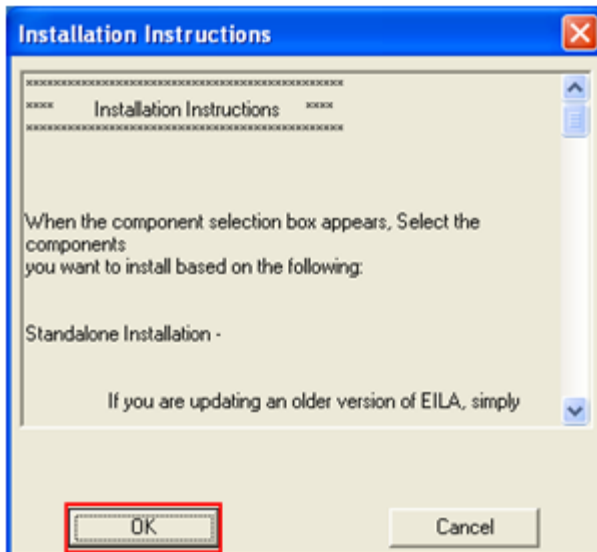
12) If you get this window, click **Run** button.



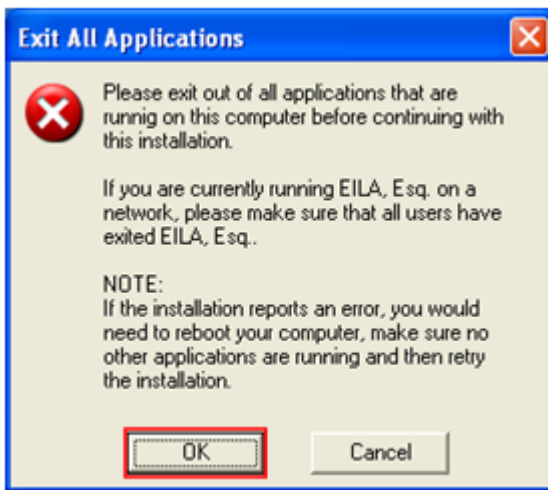
13) Click **OK** button to agree to the terms.



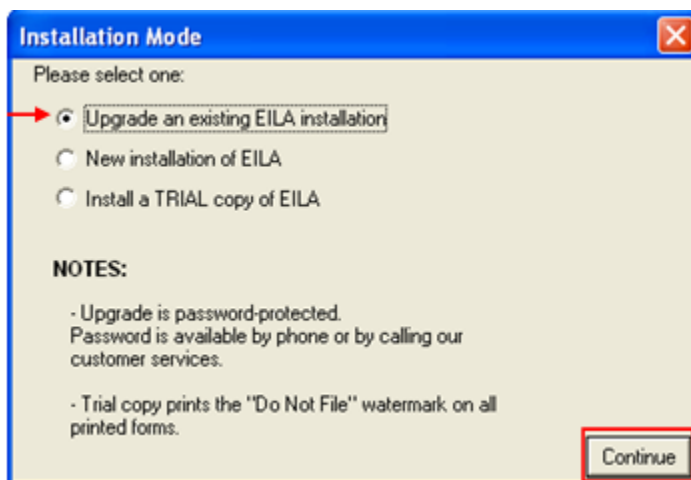
14) Click **OK** button.



15) **Exit All Applications** before continuing with the installation and click **OK**.



16) Select **Upgrade an existing EILA installation** and click **Continue**.





17) Follow the instructions on this window for **Password**. Once you have the password type it in the text box and click **OK**. Alternatively, you may call Cerenade at 1-800-617-4202 and select EILA support.

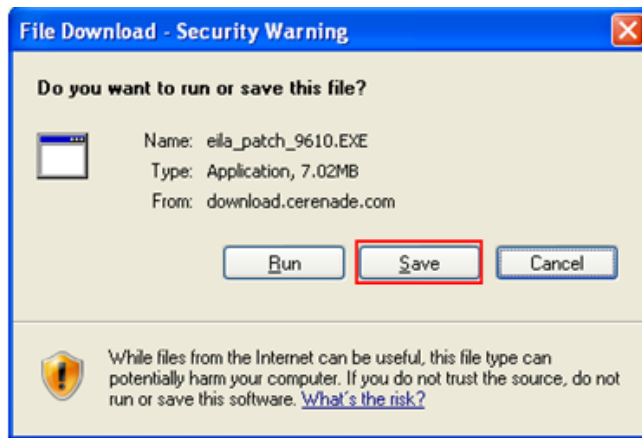


## Upgrading Minor release:

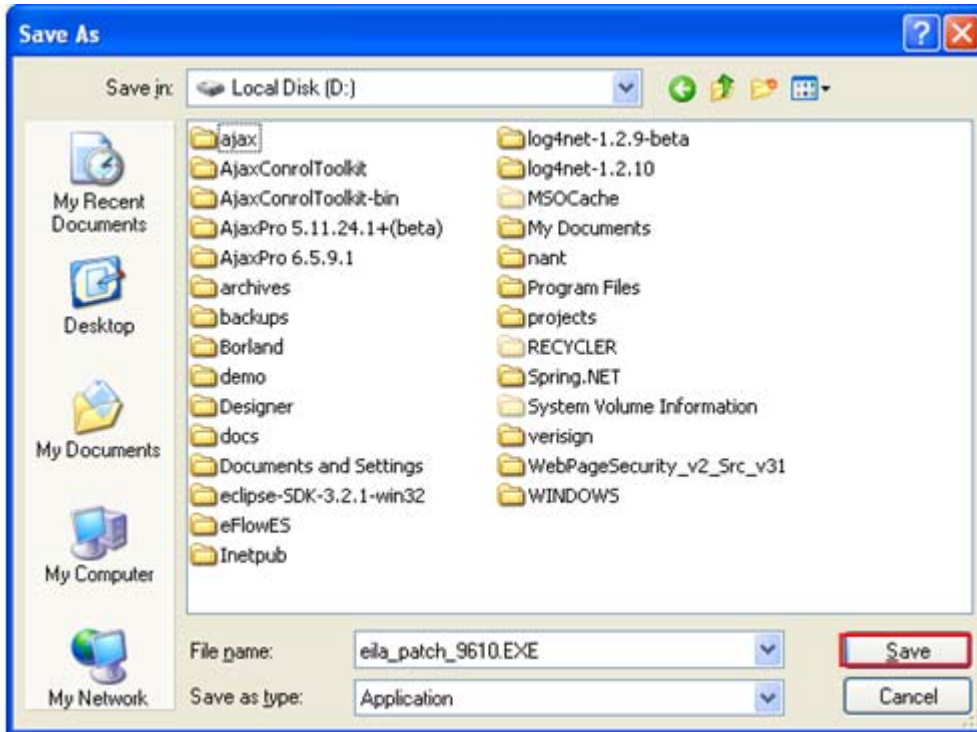
- 1) Verify which “**Minor**” version your EILA program has
  - If you don’t know please follow steps 2-4 from above
- 2) In this example my Minor version is 9.6.09, so I need to download patch 010.
  - If **Major Version** (from your PC) is same as website version, then you will need to download and install **ALL** minor releases that are later than minor version installed on your PC.
- 3) Click **Patch 010** to start the upgrade.

<b>EILA Minor Releases</b> (All of Following Minor Releases are included in the Full Release listed above)	Date added	File size
<a href="#">Patch 010</a> - New and Revised AR-11, Contact, EOIR-42A, ETA-9089, ETA-9142A2, ETA-9142B1, G-28, G-325, G-325A, G-325ao, G-325as, G-325C, G-325f, G-325sp, G-639, I-102, I-129, I-129FT, I-129H, I-129QR, I-129S, I-129W, I-130, I-131, I-134, I-134B, I-140, I-192, I-246, I-290B, I-352, I-360, I-363, I-485, I-589, I-600, I-600A, I-602, I-765, I-765D_1, I-765D_2, I-800, I-817, I-821, I-823, I-824a, I-824e, I-829, I-850, I-864, I-864A, I-864W, I-865, I-866, I-881, I-9, I-90, N-300, N-336, N-400, N-600, N-600K, N-600S, N-643, N-648, PWR-TX and instructions.	02/20/2009	7,195 kb
<a href="#">Patch 009</a> - Revised ETA-9142A1, ETA-9142A2, ETA-9142B1, G-28, I-129, I-129E, I-129FT, I-129H, I-129L, I-129OP, I-129QR, I-129SUPP, I-129W and Instructions	02/02/2008	3,408 kb
<a href="#">Patch 008</a> - New and Revised EOIR-42A, ETA-9142, I-134, I-192, I-730, N-400, PWR-MI and instructions.	01/27/2009	4,718 kb
<a href="#">Patch 007</a> - Revised ETA-9089, G-28, G-28ao, G-28e, G-28et, G-28pb, G-28s, G-28v, I-129, I-129E, I-129FT, I-129H, I-129L, I-129OP, I-129QR, I-129SUPP, I-129W, I-360, I-730, I-864, I-9, N-336, PWR-PA and Instructions	12/30/2008	4,150 kb

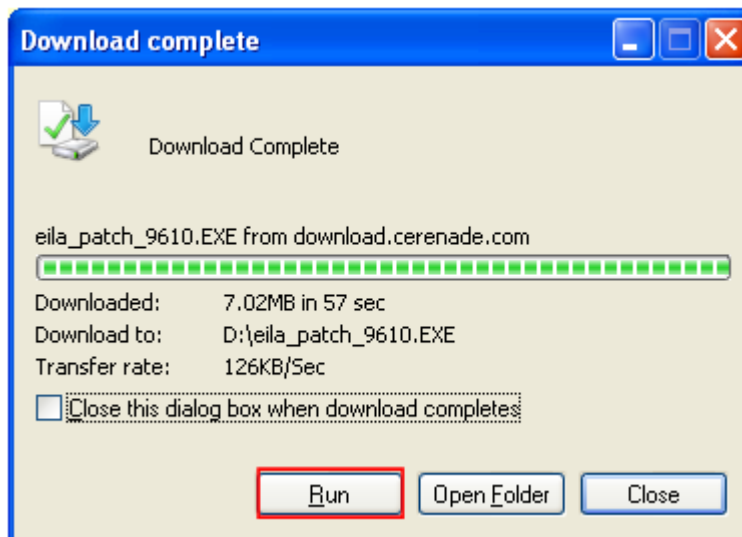
- 4) Click **Save** button.



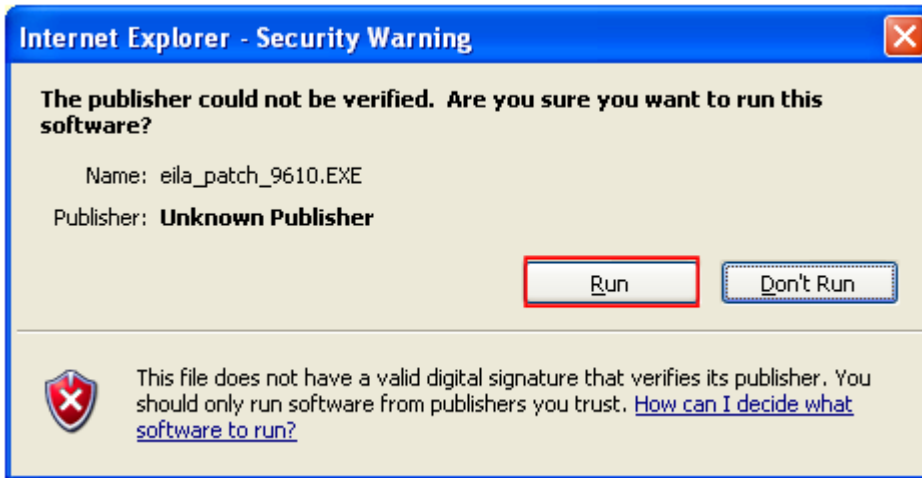
5) Save the file to your local folder or to the physical local disk such as the C: or D: drive and click **Save** button.  
**NOTE:** Make sure you remember where you save the file.



6) Once the download has been completed you will see the **Download complete** window, click on the **Run** button.



7) If you get this window, click **Run** button.



8) Follow the instructions on this window for **Password**. Once you have the password type it in the text box and click **OK**. Alternatively, you may call Cerenade at 1-800-617-4202 and select EILA support.

