

## How to make a backup from EILA

Things You Must Know Before You Backup EILA

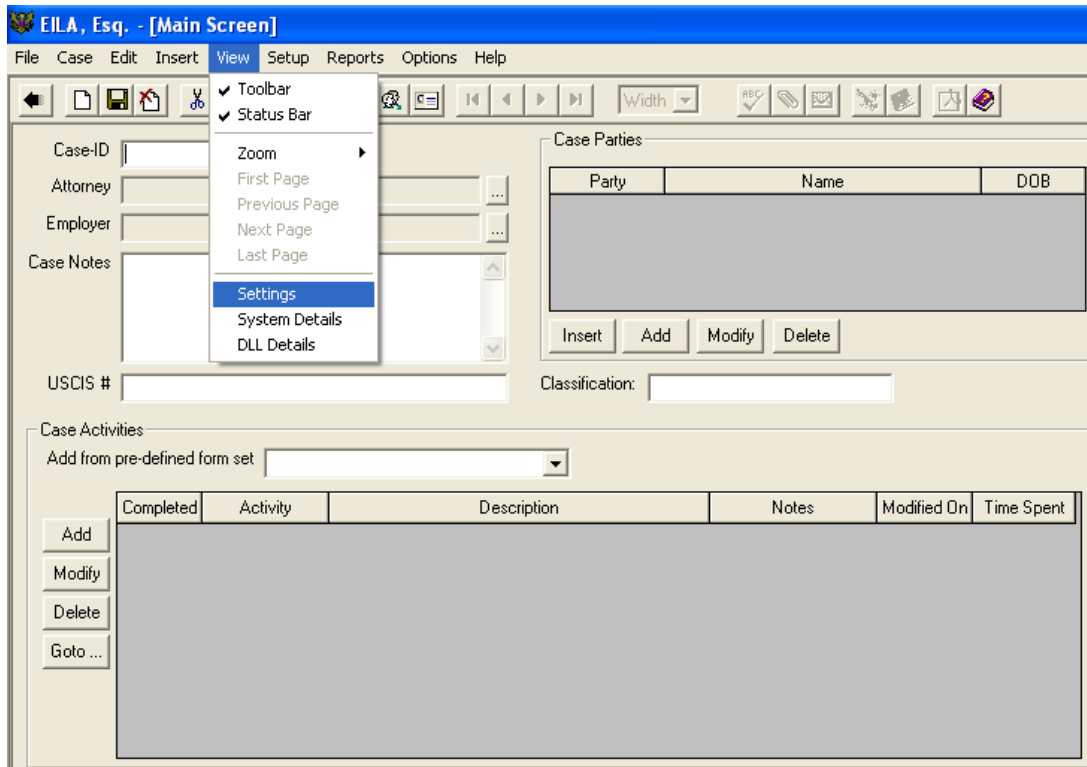
Before you start take a moment to learn the following:

### 1) What is the filename for EILA database

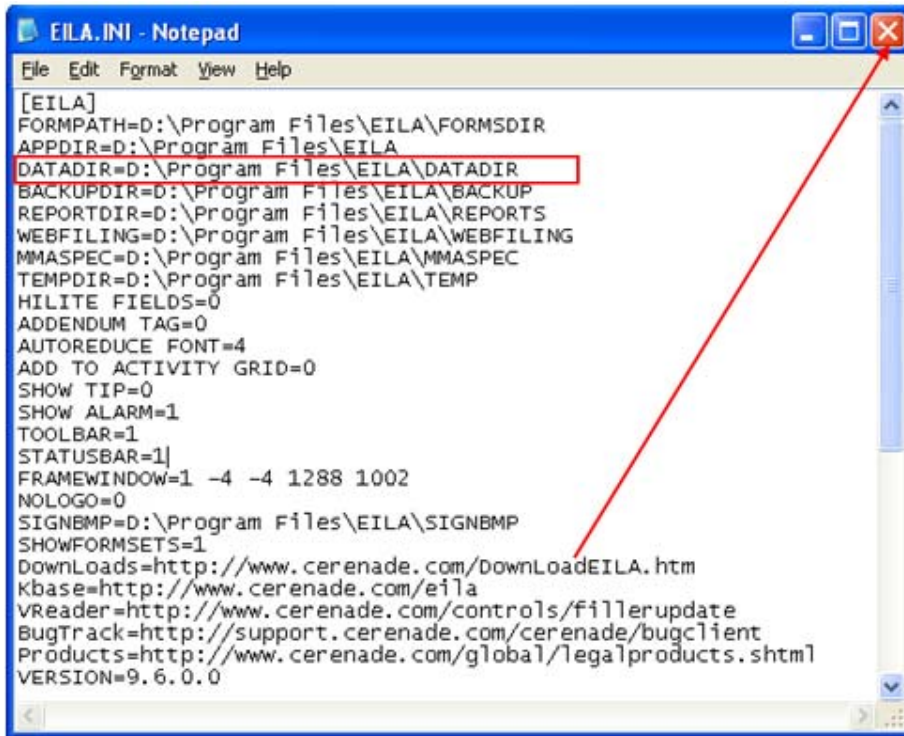
EILA database filename is **EILA.MDB**

### 2) Where is EILA.MDB stored?

- Open EILA (double click EILA icon)
- Go to **View** then select **Settings**.



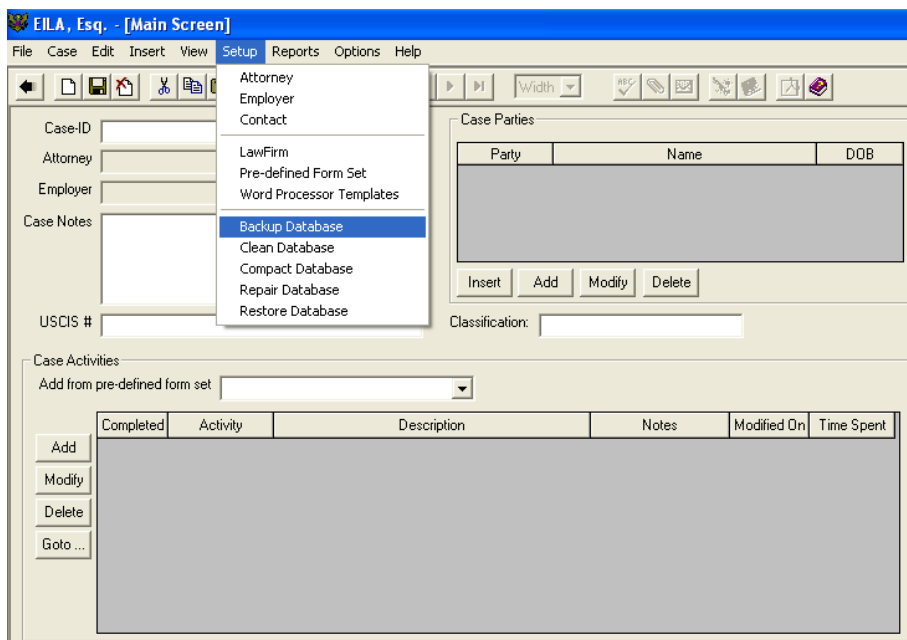
3) Following window will appear. Locate **DATADIR** parameter points to the folder where EILA.MDB is located or should be located. Make a note of the location.



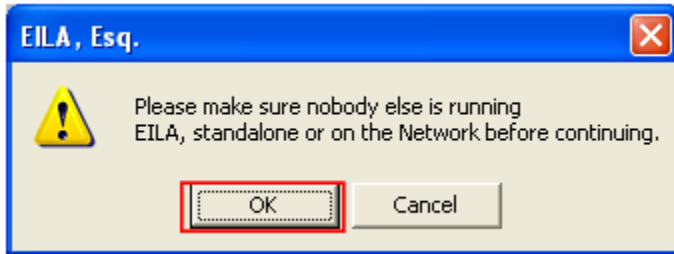
```
[EILA]
FORMPATH=D:\Program Files\EILA\FORMSDIR
APPDIR=D:\Program Files\EILA
DATADIR=D:\Program Files\EILA\DATADIR
BACKUPDIR=D:\Program Files\EILA\BACKUP
REPORTDIR=D:\Program Files\EILA\REPORTS
WEBFILING=D:\Program Files\EILA\WEBFILING
MMASPEC=D:\Program Files\EILA\MMASPEC
TEMPDIR=D:\Program Files\EILA\TEMP
HILITE FIELDS=0
ADDENDUM TAG=0
AUTOREDUCE FONT=4
ADD TO ACTIVITY GRID=0
SHOW TIP=0
SHOW ALARM=1
TOOLBAR=1
STATUSBAR=1]
FRAMEWINDOW=1 -4 -4 1288 1002
NOLOGO=0
SIGNBMP=D:\Program Files\EILA\SIGNBMP
SHOWFORMSETS=1
Downloads=http://www.cerenade.com/DownloadEILA.htm
Kbase=http://www.cerenade.com/eila
VReader=http://www.cerenade.com/controls/fillerupdate
BugTrack=http://support.cerenade.com/cerenade/bugclient
Products=http://www.cerenade.com/global/legalproducts.shtml
VERSION=9.6.0.0
```

4) Click on the **X** button.

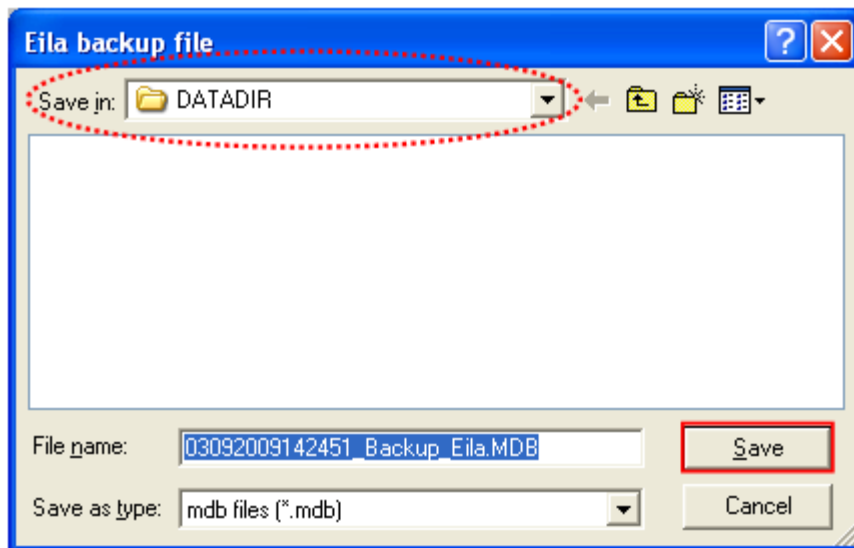
5) Go to **Setup** then select **Backup Database**.



6) Make sure nobody else is running EILA, standalone or on the Network before continuing. Click **OK** to proceed.



7) Make sure the **Save in:** displays the folder **DATADIR**, and click **Save**.



8) Click **OK**.

