

How to install EILA to a new PC

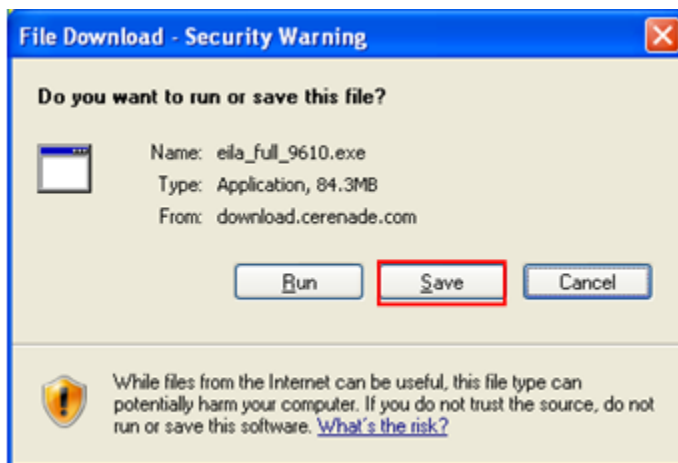
This is a two stage process. First stage is to download EILA installation file and the second stage is to activate the PC.

First Stage to download the software:

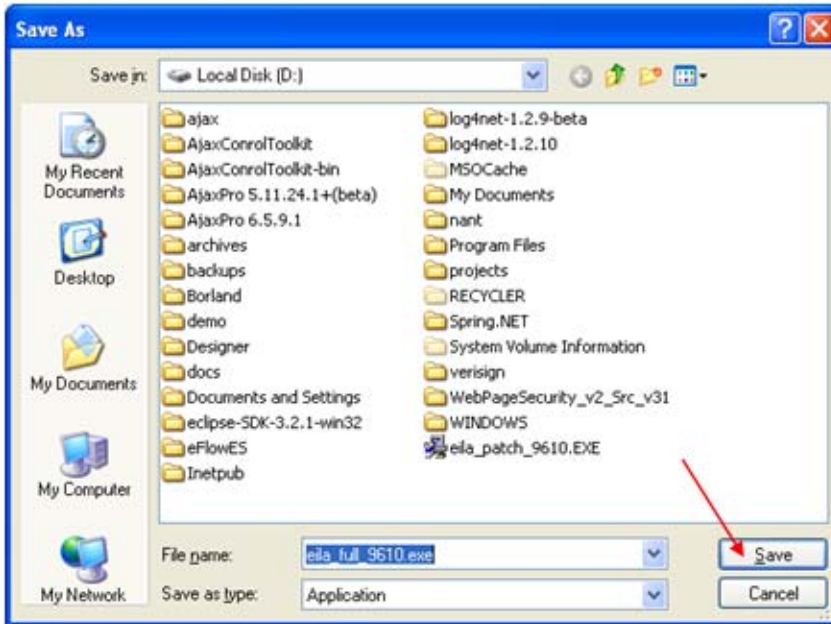
- 1) Visit <http://www.cerenade.com/DownloadEILA2.htm> to download EILA
- 2) Scroll down to section labeled **EILA Full Release- VERSION.**

EILA Full Release - VERSION 9.6.10 Complete program - for new installations	Date added	File size
NOTE: If you are currently using EILA version 9.6.09 DO NOT install this FULL Release. Instead, install the latest Minor Release (see further down.)	02/20/2009	86,411 kb
Download FULL version of the latest EILA ESQ		
Click here for Installation Password (Site License Passwords? Please Call 1-800-617-4202)		

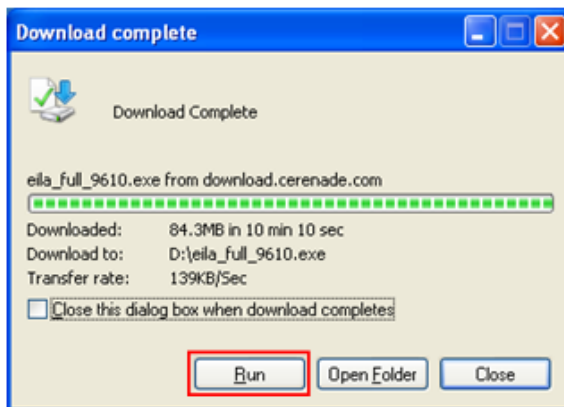
- 3) Click where it reads **Download FULL version of the latest EILA ESQ** link
- 4) Click **Save** button.



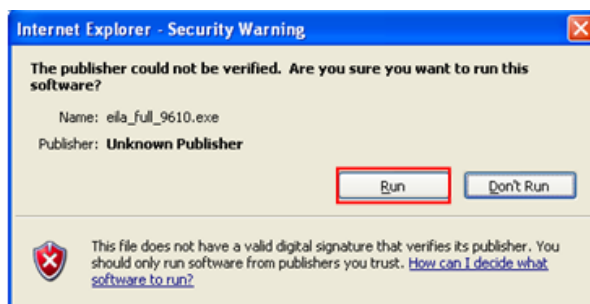
5) Save the file to your local folder or to the physical local disk such as the C: or D: drive and click **Save** button.
NOTE: Make sure you remember where you save the file.



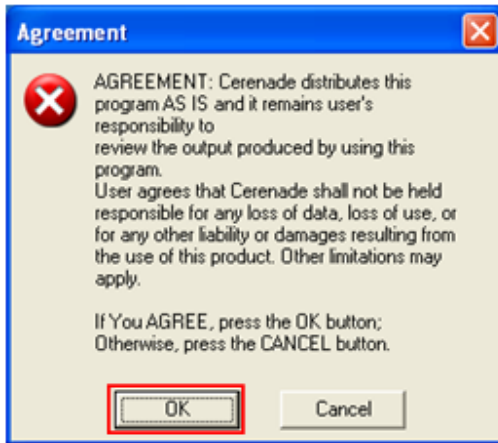
6) Once the download has been completed you will see the **Download complete** window, click on the **Run** button.



7) If you get this window, click **Run** button.



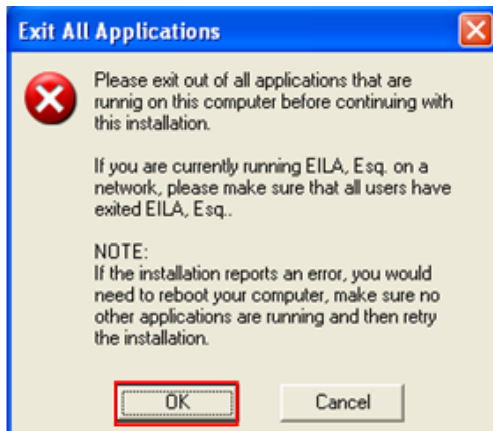
8) Click **OK** button to agree to the terms.



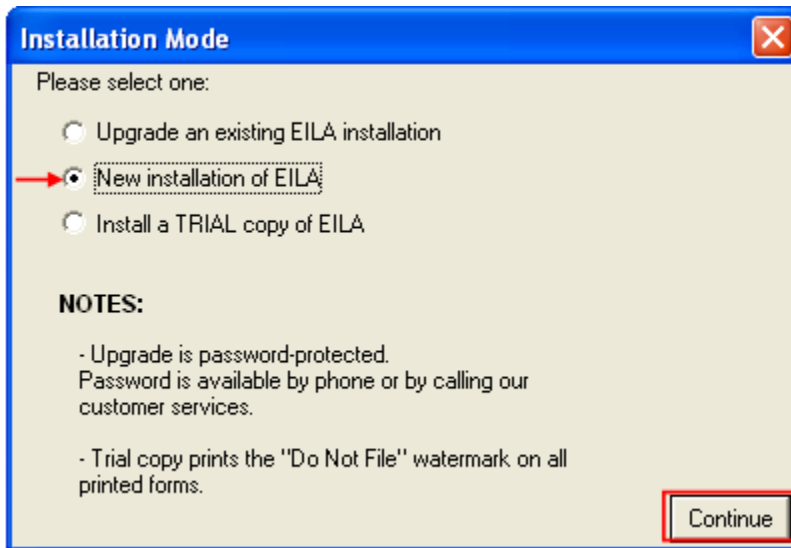
9) Read the **Installation Instructions** and once done click **OK** button.



10) Make sure to **Exit All Applications** and then click **OK**.



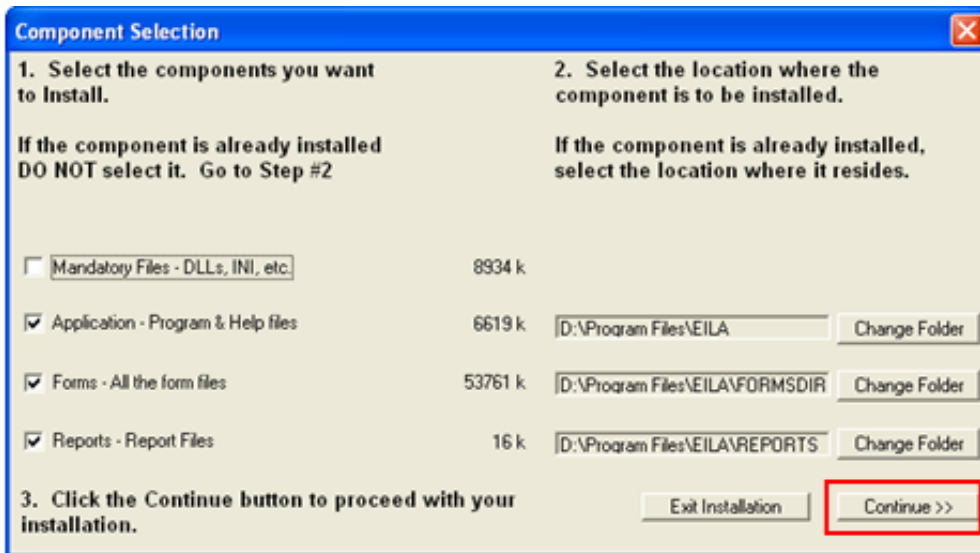
11) Select **New installation of EILA** and click **Continue button**.



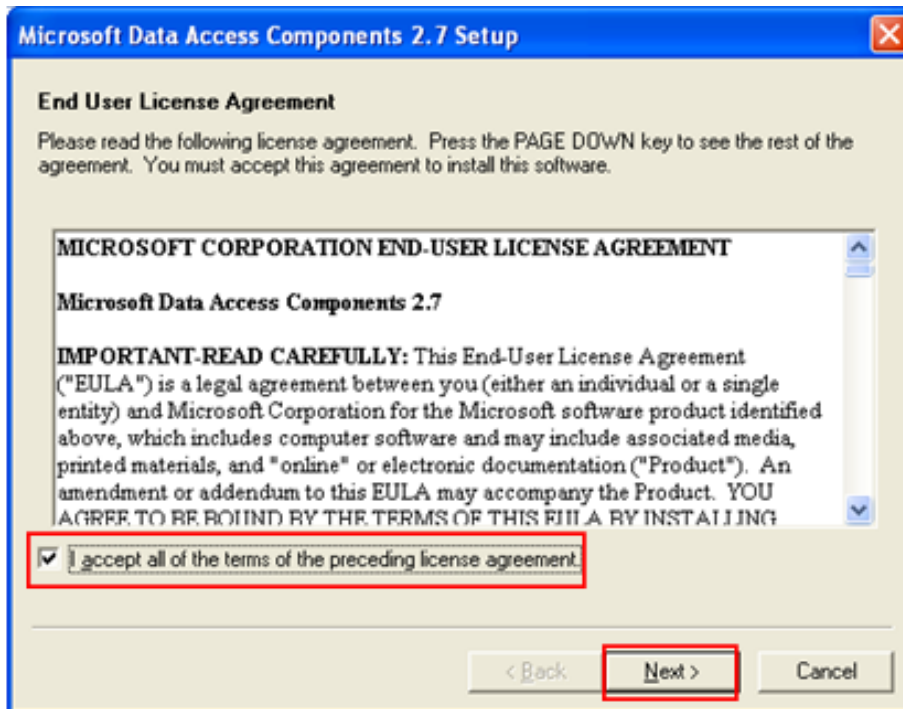
12) Follow the instructions on this window for **Password**. Once you have the password type it in the text box and click **OK**. Alternatively, you may call Cerenade at 1-800-617-4202 and select EILA support.



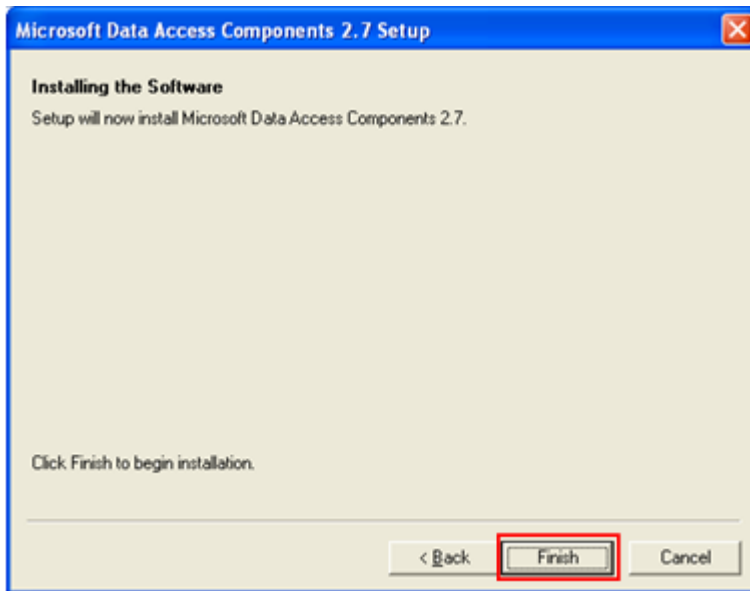
13) Follow the **Component Selection** steps in this window and click **Continue**.



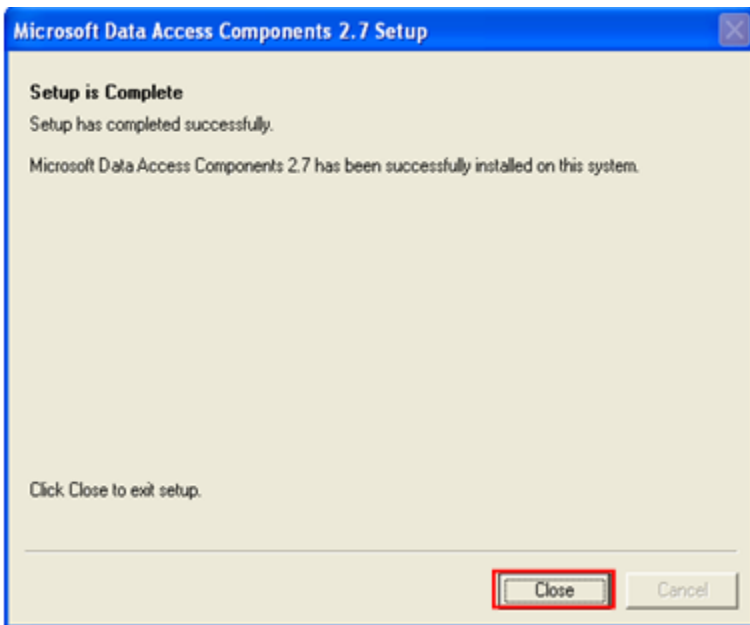
14) **End User License Agreement**, select check box to accept and click **Next**.



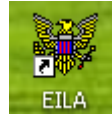
17) Click **Finish** to begin installation.



18) Click **Close** to exit setup.

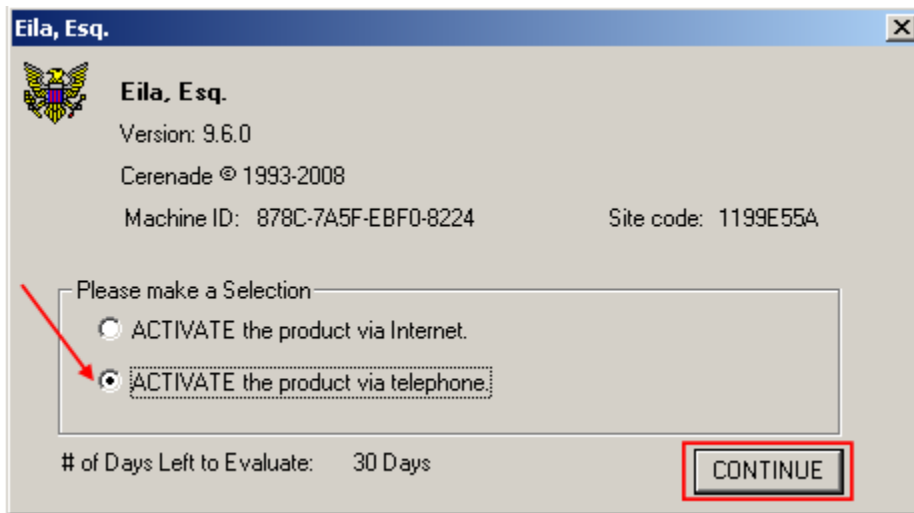


Second Stage Activation Stage:

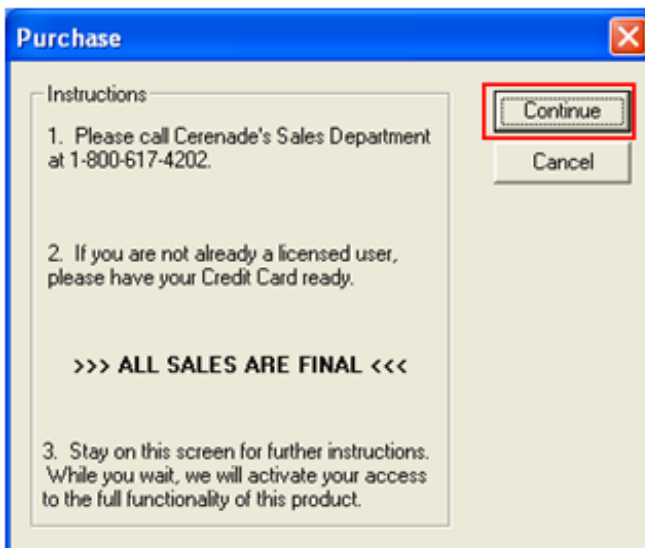


1) Start **EILA** (double click **EILA** icon at your desktop).

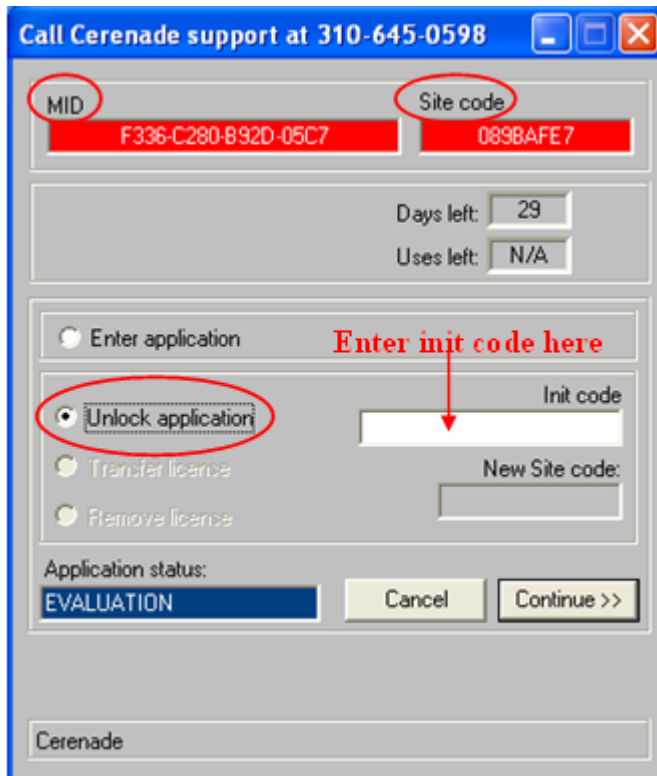
2) Following window will appear. Select **ACTIVATE the product via telephone**, and click **Continue** button or you can select **ACTIVATE the product via Internet**.



3) Follow the instructions in this window and click **Continue** button.



4) Following window will appear. Call Cerenade support at 310-645-0598 and select **Unlock application.**



The screenshot shows a window titled "Call Cerenade support at 310-645-0598". At the top, there are two red boxes: "MID" containing "F336-C280-B92D-05C7" and "Site code" containing "089BAFE7". Below these are fields for "Days left: 29" and "Uses left: N/A". A section titled "Enter application" has a red arrow pointing to the "Unlock application" radio button, which is selected. To the right of this section is a text box labeled "Init code" with the instruction "Enter init code here" above it. Below the "Init code" box is a "New Site code:" field. At the bottom, the "Application status:" is "EVALUATION", and there are "Cancel" and "Continue >>" buttons. The Cerenade logo is at the bottom left.

5) Read the **MID** number and **Site Code** to the Cerenade support representative.

6) The Cerenade support representative will give you the init code.

7) Enter the **Init code** in the text box.

8) Click the **Continue** button.



Related Articles:

Installing EILA on Windows XP:

http://www.cerenade.com/eila/How_to_install_EILA_to_a_new_PC.pdf

Installing EILA on Microsoft Vista:

http://www.cerenade.com/eila/006_EILAOnVista.htm

Before installing Cerenade software into Windows Vista, refer to this article to allow the installation to go through properly:

http://www.cerenade.com/eila/001_Vista_User_Account_Control.pdf

How to transfer EILA database:

<http://www.cerenade.com/eila/TransferEilaDatabase.pdf>