

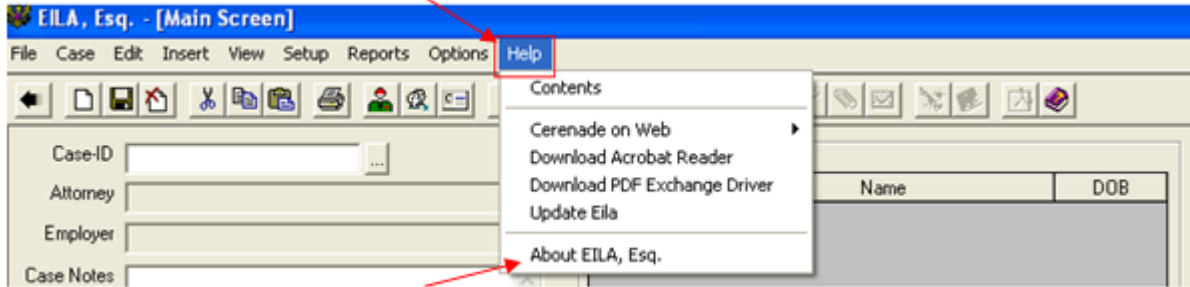
How to transfer EILA license from one computer to another

This is a two stage process. First stage is to remove license from one computer and the second stage is to activate onto another computer.

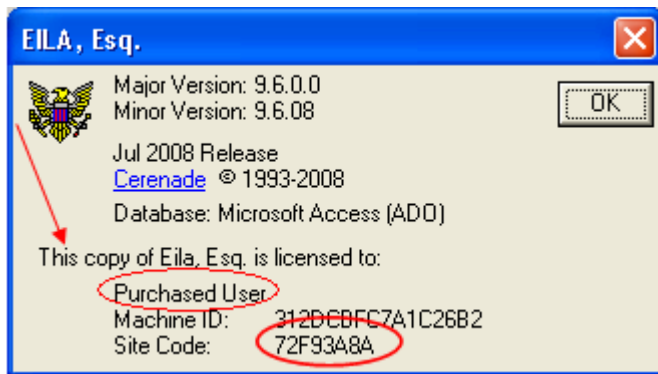
First stage is to remove the license from one computer:



- 1) Start **EILA** (Double click **EILA** icon at your desktop).
- 2) Click **Help** on Menu Bar, and then select **About EILA, Esq.**



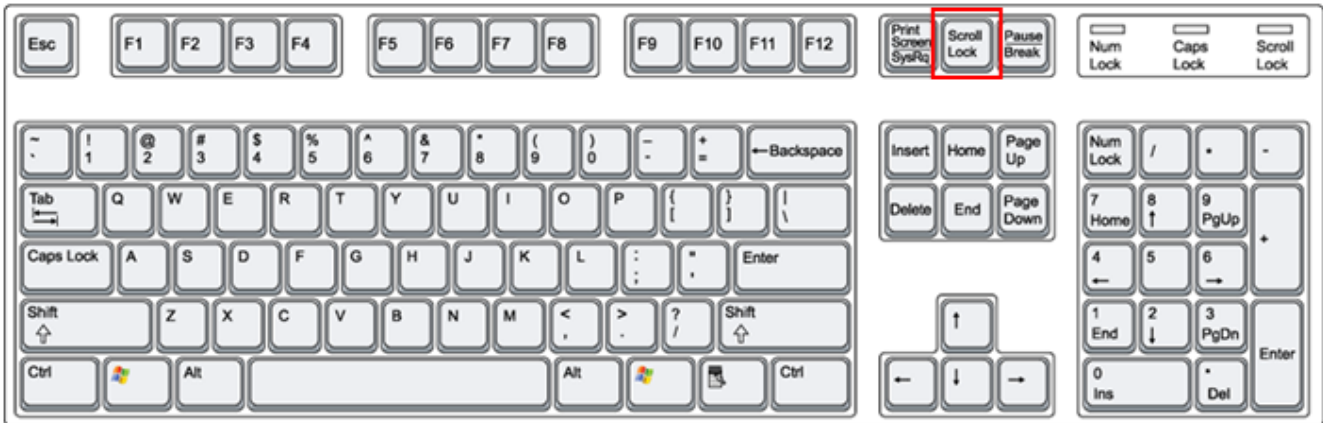
- 3) Following window will appear:
 - Below this line "This copy of Eila, Esq. is licensed to:" It must read **Purchased User** to remove the license.



- 4) Make a note of **Site Code**. This will be needed if you do not remember **init code**.
- 5) **Exit** EILA.

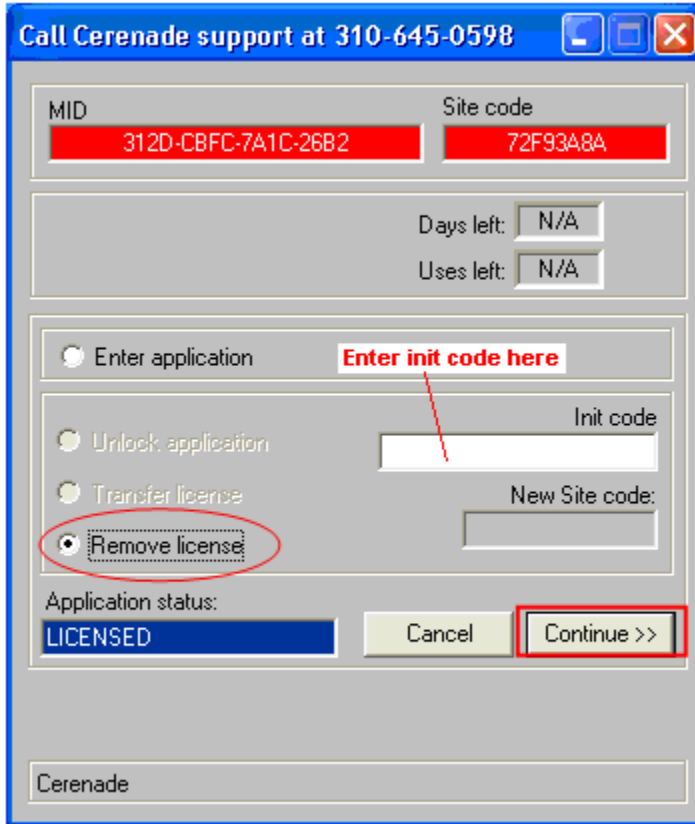
If you do not know **init code**, please call Cerenade with site code at 310-645-0598 and select EILA support.

6) Press **Scroll Lock** or **ScrLK** key. It is usually located at the upper right hand corner of your keyboard. Note: Some keyboards have different key layouts.



7) Start **EILA** (Double click **EILA** icon).

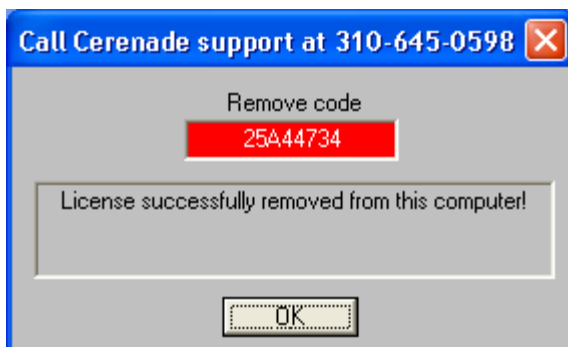
8) Following window will appear. Call Cerenade support at 310-645-0598 and select **Remove license**.



9) Give the **Site Code** to the support representative.

10) Cerenade support representative will give you the init code.

11) Input **Init code** and click **Continue** button. This will remove license and will display following window:



12) Make a note of **Remove code** and click **OK** button to continue. This **Remove code** is needed to activate EILA on other computer.



Second stage is to activate onto new or another computer:

Pre-requisites: EILA has been installed to new or another computer.

1) Call Cerenade Support to Activate EILA at (310) 645-0598 and select support for EILA.

Related Articles:

Installing EILA on Windows XP:

http://www.cerenade.com/eila/How_to_install_EILA_to_a_new_PC.pdf

Installing EILA on Microsoft Vista:

http://www.cerenade.com/eila/006_EILAOnVista.htm

Before installing Cerenade software into Windows Vista, refer to this article to allow the installation to go through properly:

http://www.cerenade.com/eila/001_Vista_User_Account_Control.pdf

How to transfer EILA database:

<http://www.cerenade.com/eila/TransferEilaDatabase.pdf>